

Building a Better Relationship With The Sun

LG Solar

FOR BUILDERS







The Sun Loves New Homes

We know the importance of creating a space for people to work, play and live their lives to the fullest. A high-efficiency solar installation with a proven performance record has the potential to make a build more impactful and let buyers feel good about their return on what is, without question, an important purchase.

We pride ourselves on building a new bond between the sun, the builder and the homeowner. Through that bond, builders can create new, modern homes that work for the homeowner. Solar systems offer a way for homeowners to produce and use clean energy, with little maintenance or upkeep.

With LG Solar™ builders can deliver more solar energy, more of the time, creating an efficient home that not only helps the environment but buyers' long-term financial security as well.



A History of Innovation

Our decades-long history has always prioritized innovative technologies. From solar to appliances to HVAC to the very entertainment products used in the home, LG provides customers with power and precision. Even on a roof installation, solar systems blend smoothly with the home to offer a stylish method of energy production that adds value.

LG 55VH7B Super Narrow Video Wall



LG Signature OLED TV



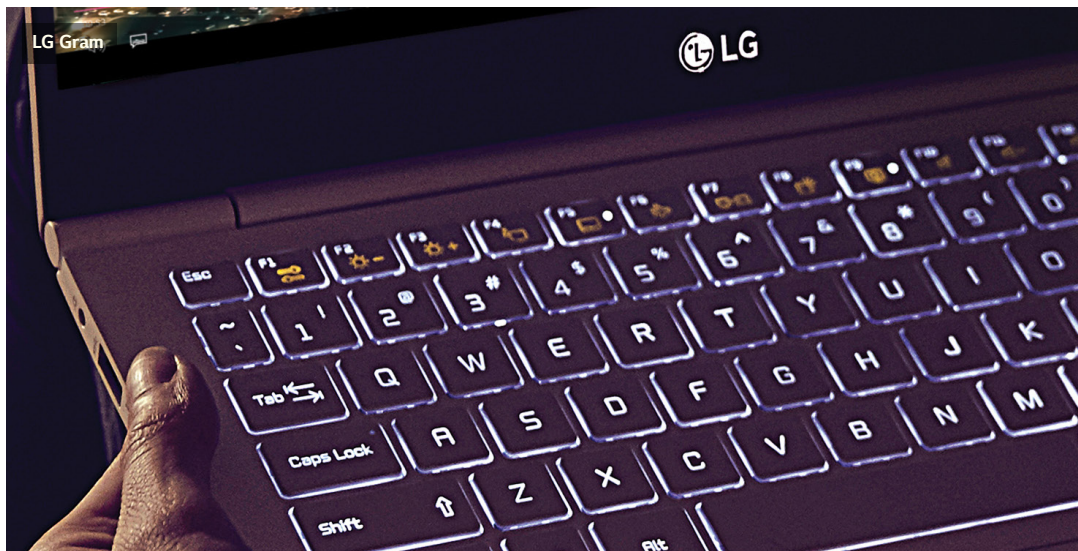
LG Studio Kitchen Suite



LG OLED Wallpaper TV



LG Gram



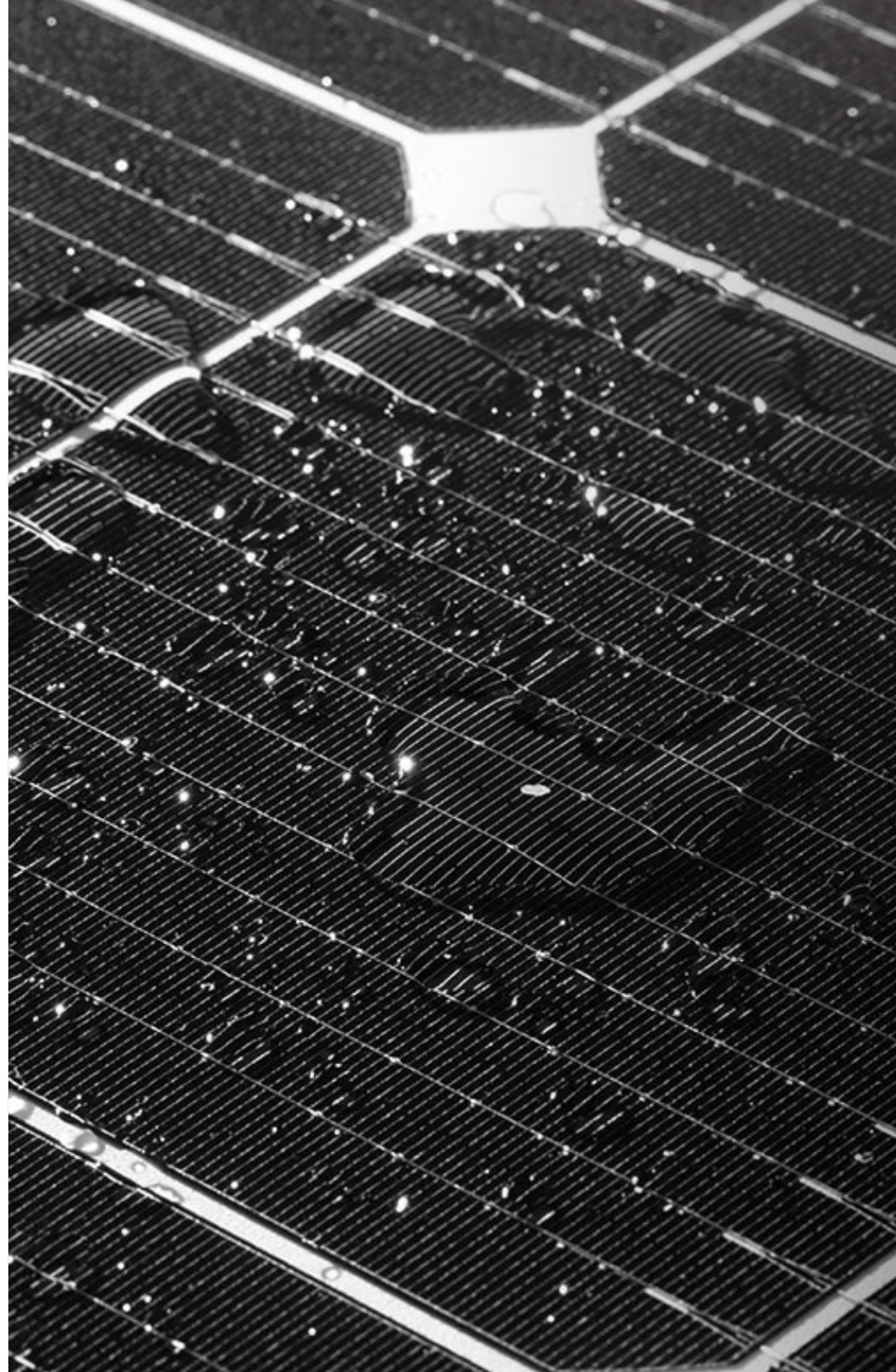


The Longevity of LG Solar Modules

LG Solar's limited 25-year warranty includes product, performance and labor* coverage. Our solar modules reliably maintain a high level of performance even with natural degradation.

We're there to protect the homeowner's investment and make sure they're not stuck with any unexpected expenses.

*Labor costs in the rare case of a needed module repair or replacement are covered up to \$450.





Award-winning Technology

We're proud to provide solar modules recognized for their efficiency and performance. A winner of the acclaimed Intersolar award, the LG NeON® 2 is among the most powerful solar modules on the market today, thanks to LG's Cello Technology.

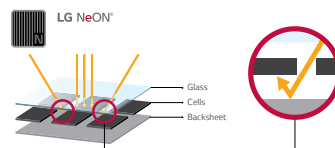


2013



N-type Cell

N-type cells convert sunlight into energy more efficiently than P-type cells. Additionally, the rear side of the cell also generates energy.

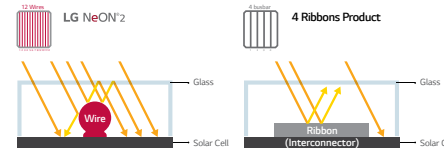


2015



Cello Technology™

Cello Technology™ uses 12 wires compared to 4 ribbons, allowing for a higher current distribution. Cello's cylindrical wiring scatters the light at various angles more efficiently than conventional flat wiring.

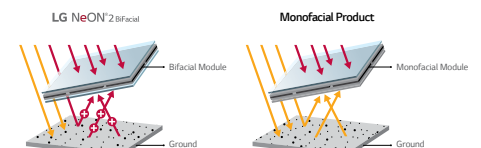


2016 / 2017



BiFacial Product

NeON® 2 BiFacial is capable of generating energy from the modules' front and rear sides.



The Sun Smiles on LG

LG offers different panel types to help create the right match between the sun and home. LG meticulously crafts each of our high-efficiency solar panels with cutting-edge designs to provide high power output and long-term performance.

Trained LG PRO Solar professionals are there to help with every step of the process, bringing out the potential of any home.

For those who seek energy independence

Sleek design and color with sophisticated matte black frame

High efficiency that guarantees at least 90.8% power output at 25 years of use with select modules

Why LG is the Smart Choice

LG's innovative new technology helps homeowners move closer to energy independence. We offer a number of solar panel options to suit the energy and design needs of our customers.

Warranties protect your investment and a long-standing commitment to innovation and quality makes embracing the sun's love more accessible than ever before.

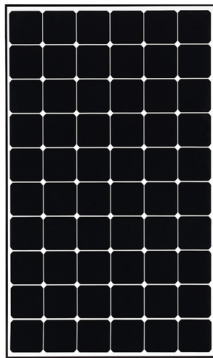
Electronics Energy Storage Systems (ESS) store energy from the sun so it can be used during peak usage hours or when the sun isn't shining

Great for homeowners who want to have a positive impact on the environment

Solar systems made to efficiently absorb the sun's energy from sun up to sun down

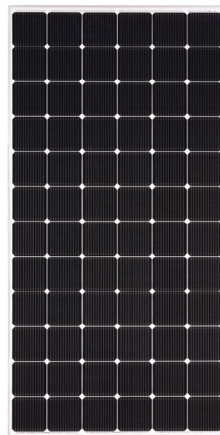
The Latest in Solar Energy Solutions

LG solar panels are made to withstand extreme weather conditions and absorb more energy from the sun. Investing in solar projects makes a tremendous impact, and LG provides meticulously designed panels to help create cutting-edge solar systems. With installations completed in three simple steps: information, site visit, and full installation, LG gives builders what they need to let the sun love their customers' homes.



LG NeON® R

Form meets function. Sleek design seamlessly integrated into most rooftops.



LG NeON® 2 BiFacial

Our award-winning BiFacial modules can absorb light at both the front and back sides of the modules due to a transparent backsheet.



LG NeON® 2

Award-winning performance in all weather conditions. Low temperature coefficient and high efficiency.



LG Electronics Energy Storage Systems

Improve the efficiency of an LG Solar™ home. Made to help maximize effectiveness, the LG DC 7.6kW offers storage solutions for surplus energy generated by LG Solar Panels. Designed to deliver a cost-effective back-up power solution, the LG AC 5kW puts reliability into the hands of the homeowner. Power homes, even when the sun's not shining.

Take Control with the LG Electronics Energy Storage System

The LG Electronics ESS is a state-of-the-art home Energy Storage System (ESS) designed for homeowners who want to take control of their home energy usage. The LG ESS features quick and easy installation for installers, a compact and elegant design, a reliable, scalable battery and an integrated smart energy management system (EMS). The ESS is offered in both AC-coupled and DC-coupled configurations.

The 7.6kW DC-coupled solution with an integrated high-efficiency PV inverter is well-suited for new Solar PV + Storage installations. It enables homeowners to seamlessly store excess solar energy to power their home when their modules are not producing electricity (such as at night).

The 5kW AC-coupled solution is ideal for customers looking to install an ESS at a home with an existing solar system.

Both systems offer a reliable, cost-effective way to manage energy usage and Time-of-Use (TOU) rates (the higher rates some utilities charge for electricity during “peak” usage hours, such as in the late afternoon). The ESS also provides backup power in the case of a grid power outage.

The Multi-string and Maximum Power Point Trackers (MPPT)s, designed for multi-angled roofs, help the PCS/inverter achieve 97.5% CEC efficiency.



LG Electronics ESS at a Glance

- ✓ Easy, two-person professional installation: all required components are included
- ✓ The scalable battery can be sized up to 19.6kWh for a longer back-up time
- ✓ The accompanying mobile app allows homeowners to monitor the system's energy flow from almost any location
- ✓ A High Efficiency Power Conversion System achieves 97.5% CEC efficiency thanks to multi-string and MPPTs designed for multi-angled roofs
- ✓ The Smart Energy Management System provides control over energy usage and electricity bills
- ✓ A 10-year limited warranty covers all components; when the ESS is paired with LG Solar modules, homeowners can turn to a “one-stop-shop” for any warranty issues



LG Solar

Visit us at LG Solar.



LG Solar

The Sun Loves LG

For more information visit: <http://lg.com/us/solar>



LG Electronics Inc.

2000 Millbrook Court, Lincolnshire, IL, 60069 US
Copyright © 2019 LG Electronics. All rights reserved.